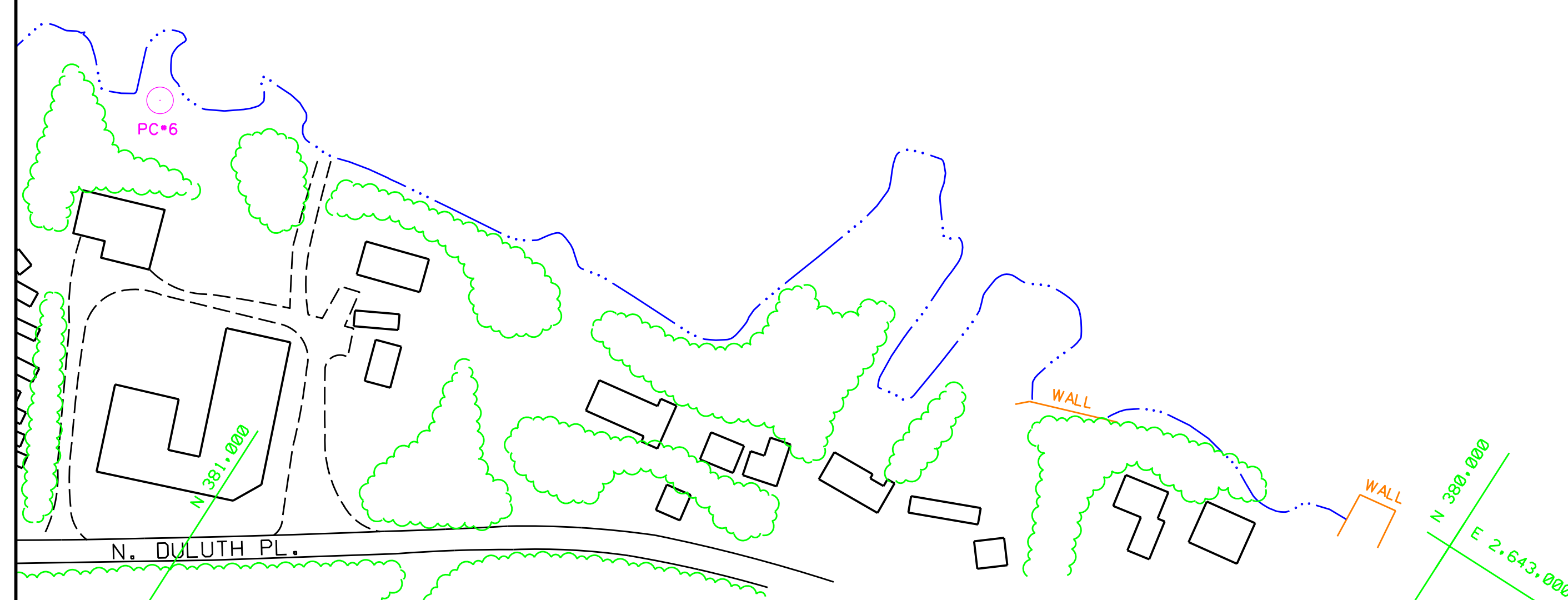


COORDINATE TABLE			
STA.	DESCRIPTION	COORDINATES	
		NORTHING	EASTING
45	CHANNEL PT.	375156.151	2647741.488
48	DD.	375193.856	2647631.168
49	DD.	380166.921	2644540.433
50	DD.	380301.511	2644751.113
51	DD.	380099.627	2644435.094
52	DD.	380368.805	2644856.453
53	DD.	384633.587	2641512.814
54	DD.	384926.289	2641944.932
G	CENTERLINE PT.	375126.691	2647908.639
H	DD.	384800.138	2641728.903

STURGEON BAY



K.A.O.
38-C6
296
20JUL11

PROJECT DEPTH 22 FEET
22 FOOT CONTOUR

NOTES:

SURVEY CONTROL AND BENCH MARK DATA IS AVAILABLE FROM THE DETROIT DISTRICT, ENGINEERING & TECHNICAL SERVICES, OPERATIONS TECHNICAL SUPPORT BRANCH, LAKE MICHIGAN AREA OFFICE, KEWAUNEE SUB OFFICE.

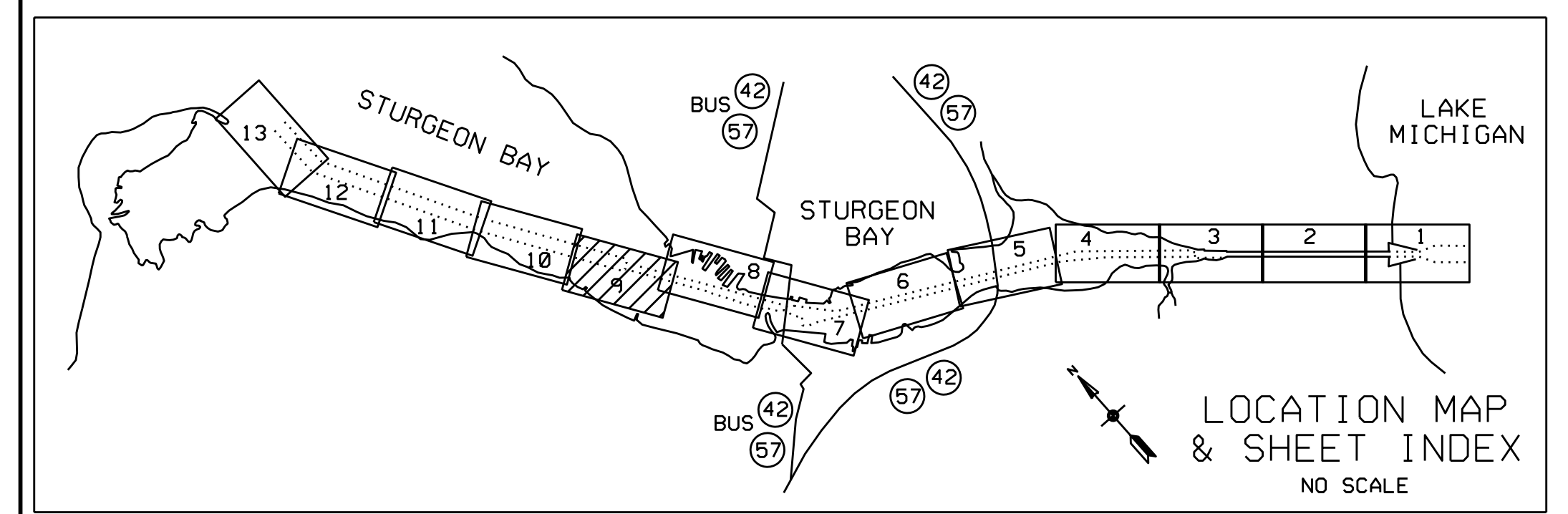
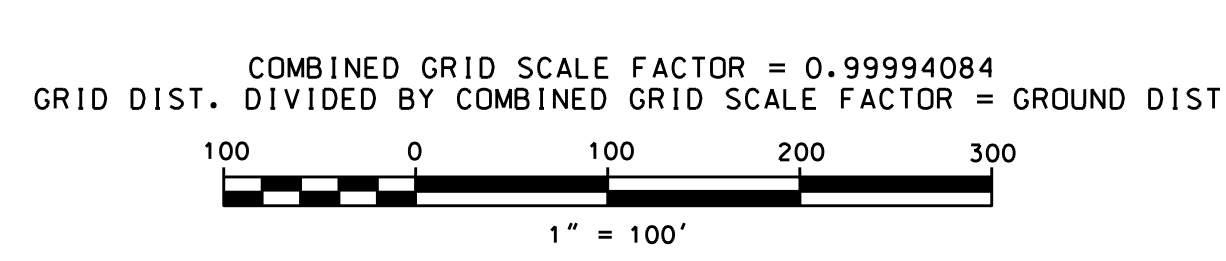
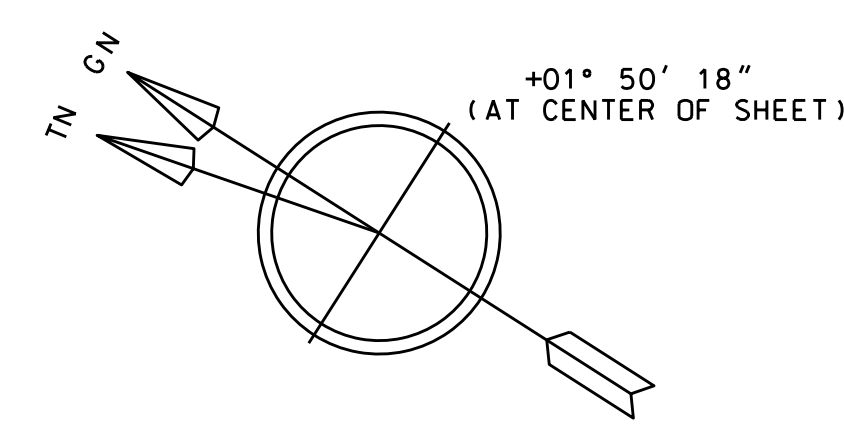
SOUNDINGS ARE IN FEET AND ARE REFERRED TO LOW WATER DATUM, 577.5 FEET ABOVE MEAN WATER LEVEL AT RIMOUSKI, QUEBEC (INTERNATIONAL GREAT LAKES DATUM 1985).

THE INFORMATION DEPICTED ON THIS MAP REPRESENTS THE RESULTS OF SURVEYS MADE ON THE DATES INDICATED AND CAN ONLY BE CONSIDERED AS INDICATING THE GENERAL CONDITIONS AT THAT TIME.

- ▲ GPS CONTROL POINT
- ▲ BRONZE DISK SET IN CONCRETE
- PROJECT LIMIT POINT

HORIZONTAL DATUM BASED ON WISCONSIN STATE PLANE COORDINATE SYSTEM, WISCONSIN LAMBERT PROJECTION, CENTRAL ZONE, NORTH AMERICAN DATUM 1983 (NAD 83).

THE SURVEY SHOWN WAS CONDUCTED BY THE LAKE MICHIGAN AREA OFFICE, KEWAUNEE SUB OFFICE SURVEY PARTY ON 30 JUNE 2011 (369+00-393+00) AND 19 JULY 2011 (394+00-406+00), USING GPS POSITIONING, AN INERSPACE 448 SOUNDER, AND A HYPACK HYDROGRAPHIC SURVEY SYSTEM.



NO.	DATE	REVISION	BY
U.S. ARMY ENGINEER DISTRICT, DETROIT CORPS OF ENGINEERS DETROIT, MICHIGAN			
DRAWN BY K. J. K.		STURGEON BAY & LAKE MICHIGAN SHIP CANAL, WISCONSIN CONDITION OF CHANNEL - JUL 2011 LAKE MICHIGAN AREA OFFICE	
REVIEWED BY R. D. M.			
CHECKED BY A. R. M.		APPROVAL RECOMMENDED:	
REVIEWED:		DATE:	
SUBMITTED:		DATE:	
APPROVED		SCALE 1" = 100'	
P.E. CHIEF, ENGINEERING & TECHNICAL SERVICES		DRAWING NUMBER SHEET 9 OF 13	